

Teams Request Wizard

The iWorkplace™ Teams Request Wizard is a provisioning tool that supports users to safely create new Microsoft Teams, from team types, set by your organisation.



Easy & Flexible

Ways of working and collaborating at scale. Including Teams discoverable in search and navigation.



Confidence & Control

Teams and content are consistently structured, governed and with the right metadata and protection built in.



Templated Team Type Designs

Team templates can be designed to meet your organisations requirements, and the needs of users.



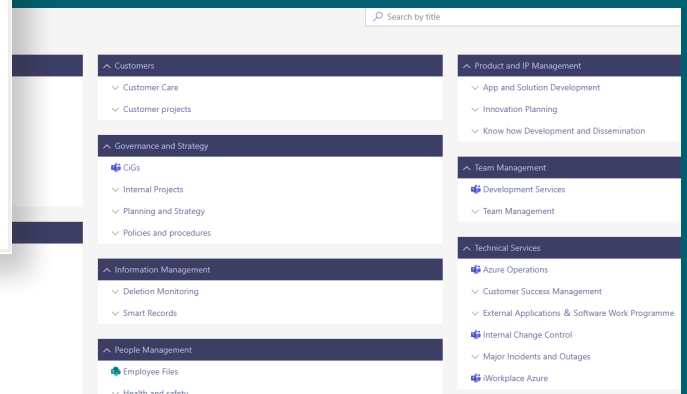
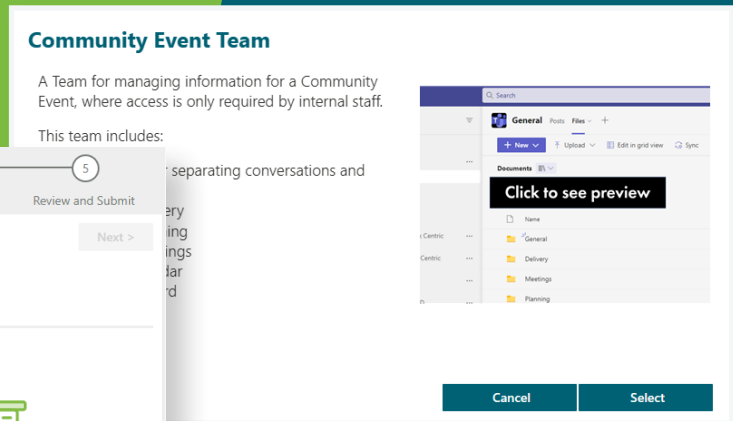
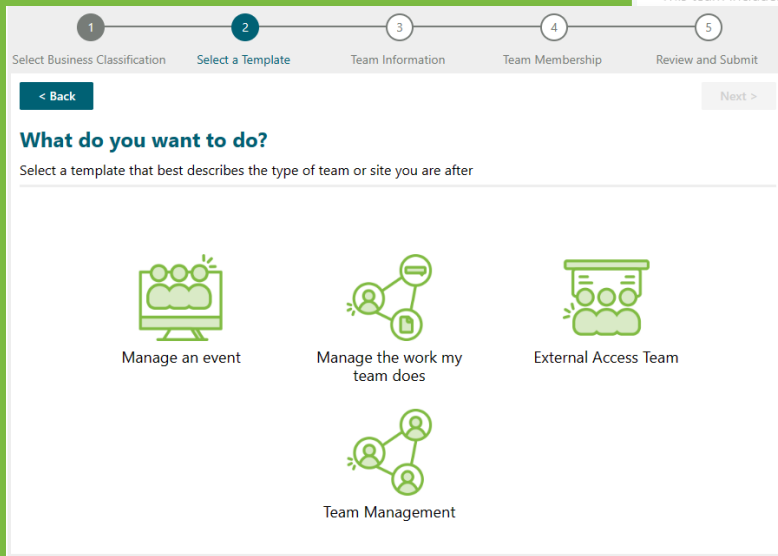
Managing Teams at scale

Large numbers of Teams are not a problem. Teams are created with built in navigation to allow visibility and easy accessibility of files for users.

Empower your users to safely create Teams

Easy for users to request the Teams they want. The wizard will guide them through selecting the Team they need

Preview of requested Teams. Users can see an example of the type of Team they are requesting, including preview video and list of features



Build your Teams ECM as you are ready. Teams use can grow over time as users and your organisation are ready to roll out

How does it work?

The Teams Request Wizard can be set up to allow for self-service (no approval required), or requests where a new Team request is sent to a designated approver.

In order for a new Team to be provisioned, the user will be prompted to enter information about the requested team including:

1. Preview and select from a range of team types set by your organisation.
2. Select the business classification the team relates to.
3. Enter a Team name and description.
4. Enter the details of who needs access to the team and files in SharePoint, including Team Owners, Team Members and SharePoint Workspace Contributors.